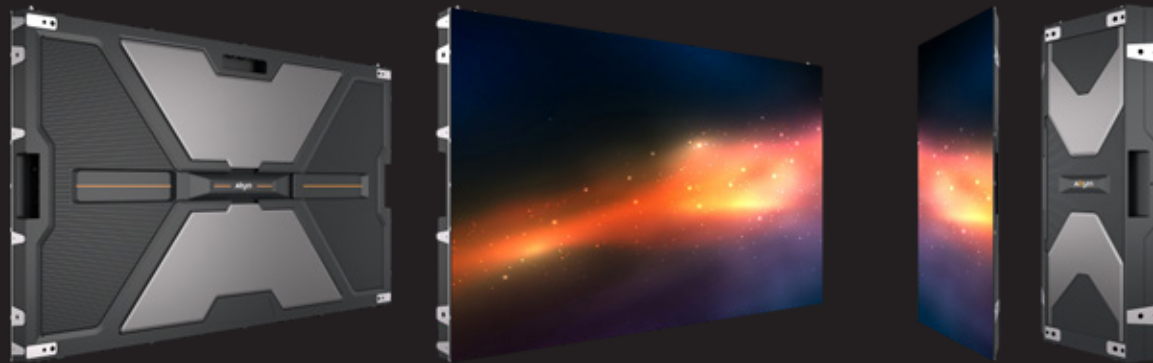


NX Series
Unparalleled visual experience.



NX Series



16:9
Aspect ratio



HDR10 (optional)
Image processing technology



1500nits (optional)
Maximum level of brightness



EMC Class B
Civil use level*



45° small panel
Creative shape



20kg/m² **43.5** mm
Lightweight and ultra-thin



Precise floating connector
Bright and dark lines adjustment

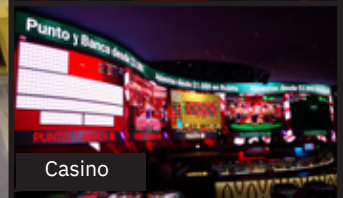
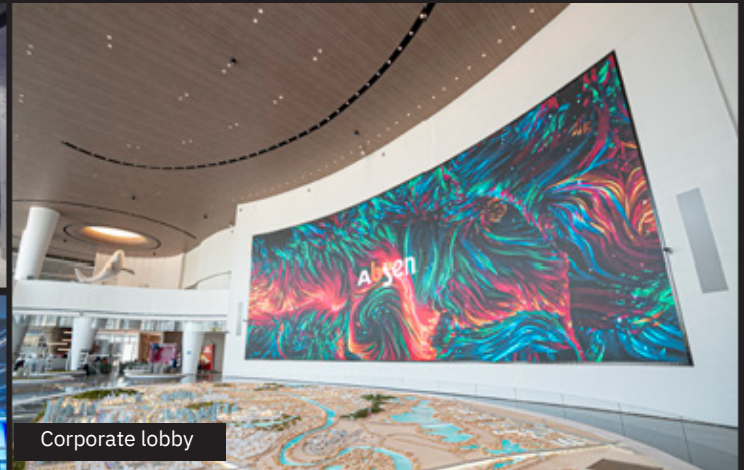
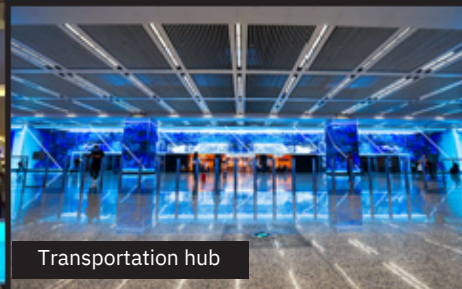
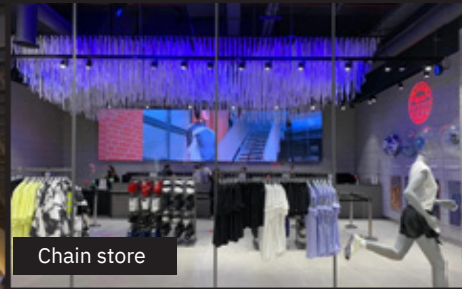


Front/rear maintenance
Module, PSU, receiving card, etc.*

*The dual backup version of large panel and the 2-in-1 small panel do not support EMC Class B

*The module of small panel does not support rear maintenance.

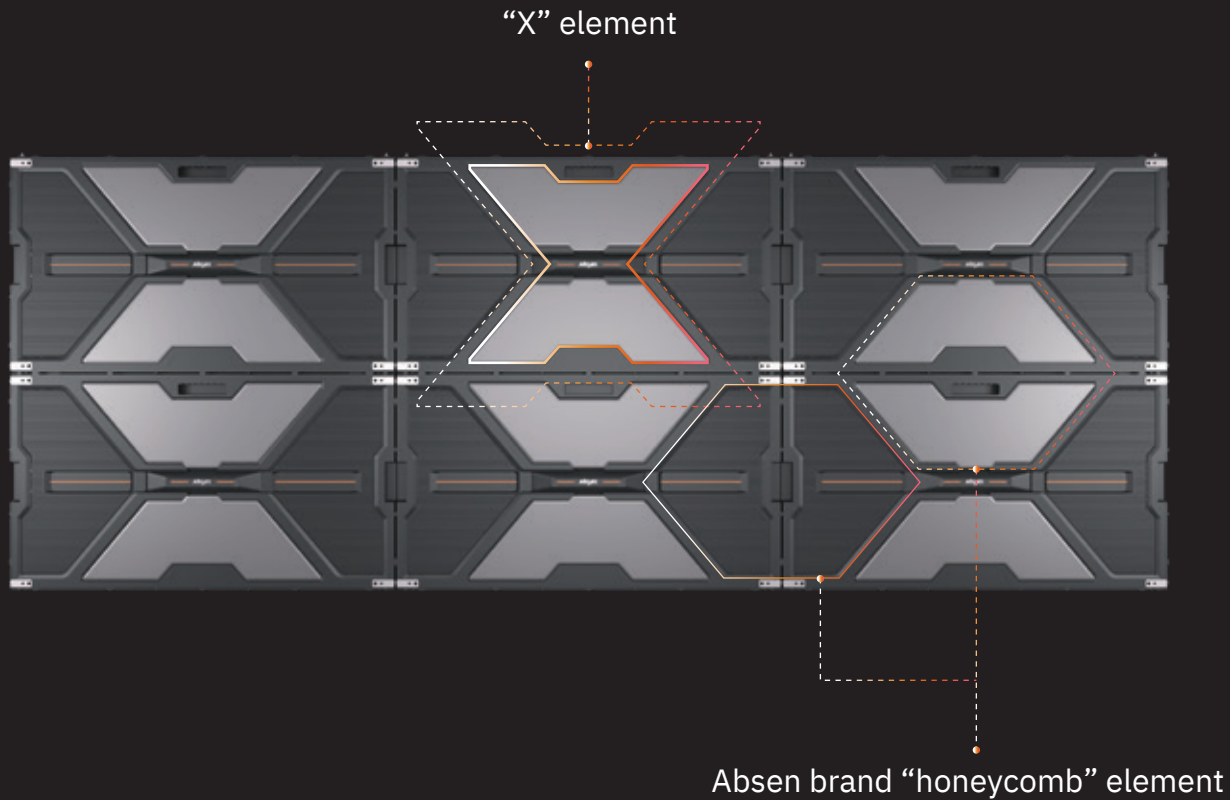
For all commercial display applications





Striking “X” design

As a symbol of infinite possibilities, letter “X” becomes an exterior design element of the panel, and the Xs will form a “honeycomb”, an Absen brand element. The unique design conveys Absen's confidence in its display expertise and product quality.



Ultra-thin and lightweight panel

16:9 aspect ratio for ideal vision; 43.5mm in thickness and 20kg/m² in weight for better experience.



43 inch panel

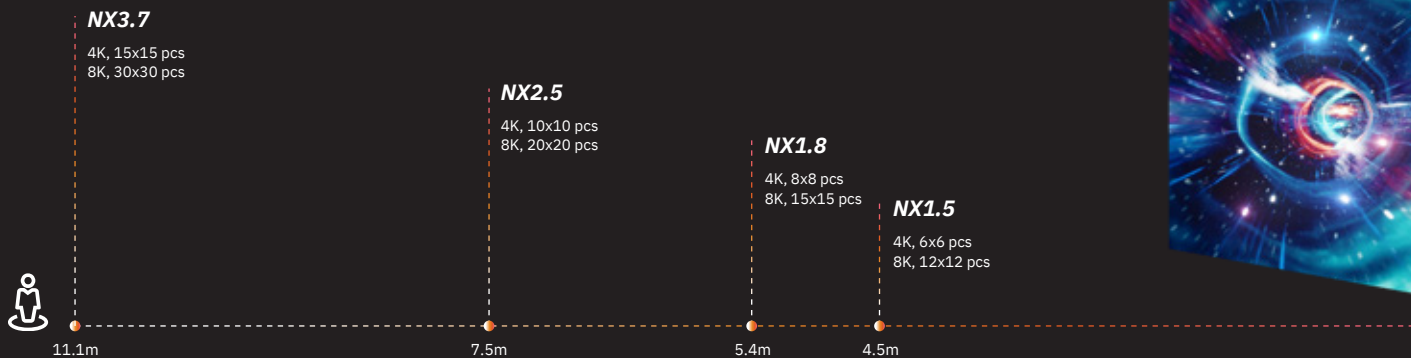
16:9
Aspect ratio

43.5_{mm}
Ultra-thin design

20kg/m²
Ultra-lightweight

Superior 4K/8K visual experience

Products featuring a variety of pixel pitches to provide customers with more high-definition choices.



*The 4K display resolution of NX1.5/2.5/3.7 are 3840*2160px, and NX1.8 is 4096*2304px. *The 8K display resolution of all models are 7680*4320px.
*Best viewing distance, for reference only.



Dual brightness configuration

Dual brightness configurations*, with brightness up to 800nits for normal brightness and up to 1500nits for high brightness.



800nits Normal brightness version

For indoor use in brand chain stores, report hall, conference room, house of worship, etc.



1500nits High brightness version

For scenarios severely affected by ambient light, such as shopping mall, corporate lobby, exhibition hall, etc.

*NX1.5 only has normal brightness version.

A5C+ calibration technology

A5C+ pixel by pixel calibration technology eliminates the difference in brightness and chromaticity within and between panels, improves the uniformity of display, and reproduces flawless images.



Before



A5C+ calibration
technology

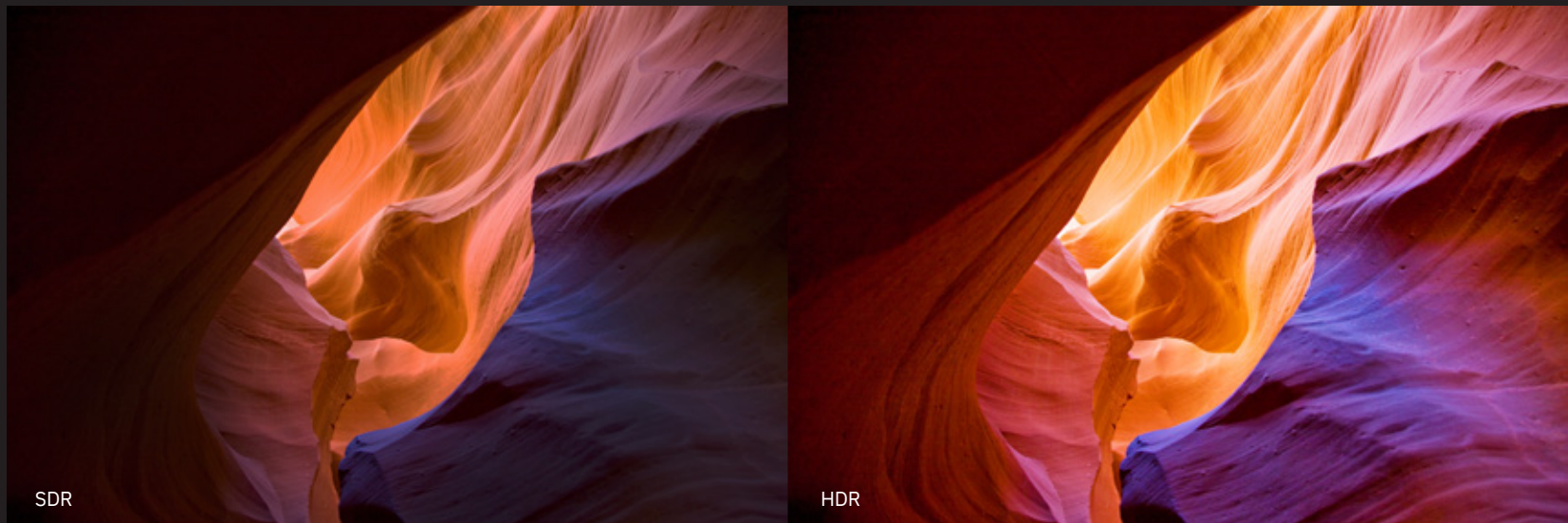


After



Amazing color management technology

Absen's professional color management technology makes the color of the NX series more textured and natural.



HDR10 (optional)
Image processing technology



7600:1
Highest contrast ratio*



16bit
High grayscale and fine image*

*Refers to the NX2.5 high brightness version with a contrast ratio of 7600:1.

*After internal processing, the grayscale can reach 16bit, and the hardware is 14bit.



High grayscale at low brightness

The NX series supports high grayscale display at low brightness, and details can be revealed even in low brightness condition.



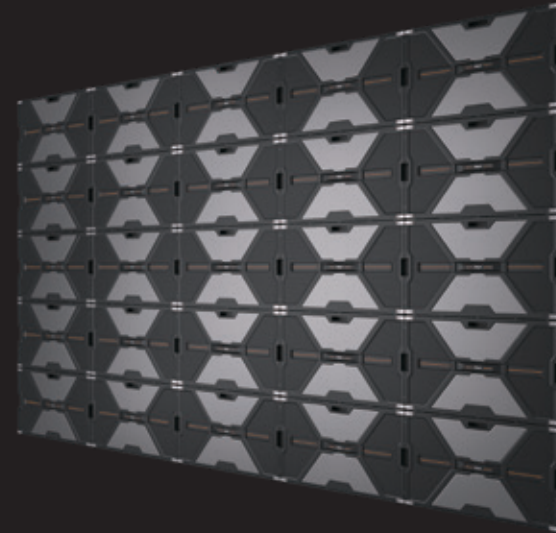
Others | Missing details



NX Series | Clear details

Anti-blue light and anti-radiation

TÜV Rheinland low blue light certification and EMC Class B for cozy and safe viewing experience.



Low blue light

- TÜV Rheinland low blue light certification
- Protecting eyes from high-energy short-wave blue light

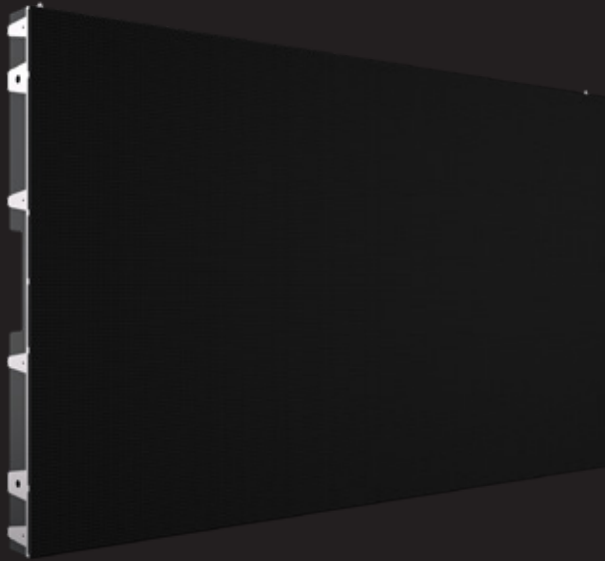


EMC Class B

- Civil use level
- Prevent harm to human body caused by excessive electromagnetic radiation

Efficient dynamic energy-saving technology

NX series can automatically turn on the dynamic energy-saving mode to achieve different energy-saving effects in standby and working states.*



Energy saving **40%**
Standby state



Energy saving **20%**
Working state



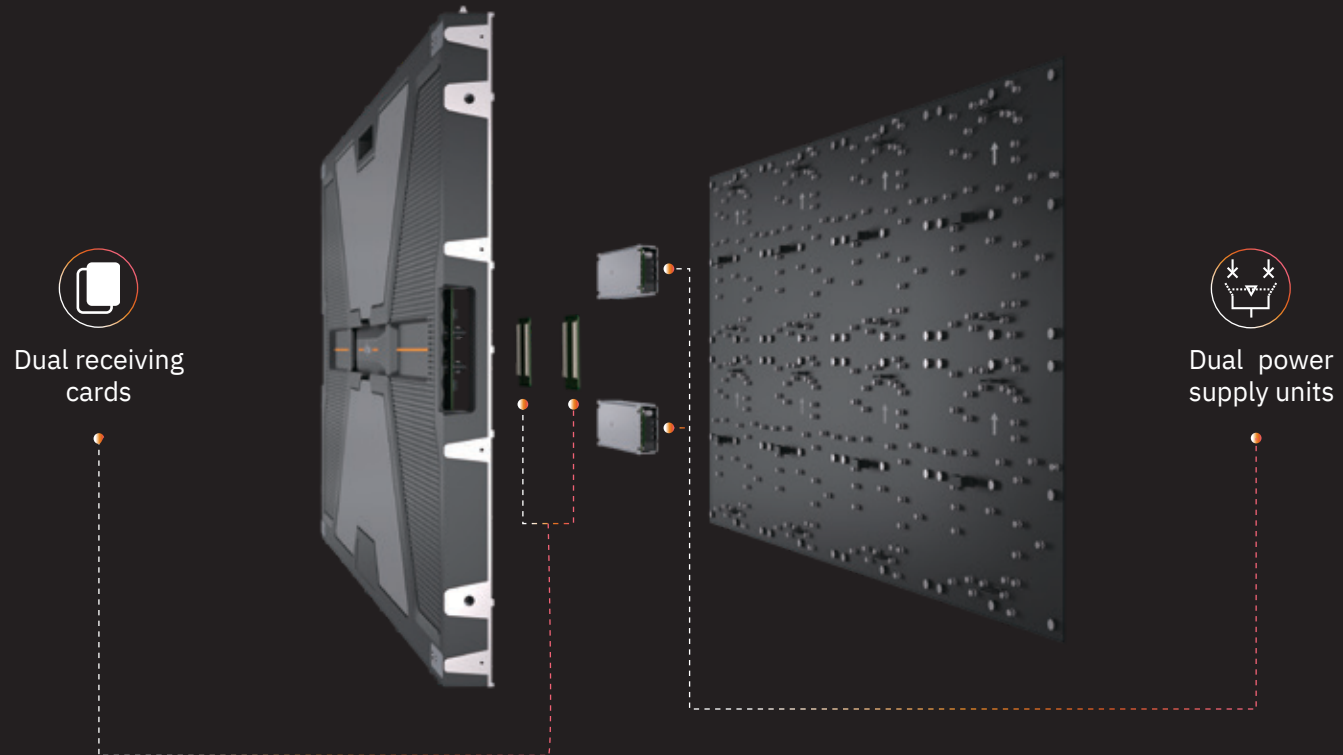
Reduced by **5°**
Screen surface temperature

*Only NX1.5 and NX1.8 support dynamic energy saving; energy saving and cooling effect varies from image to image.



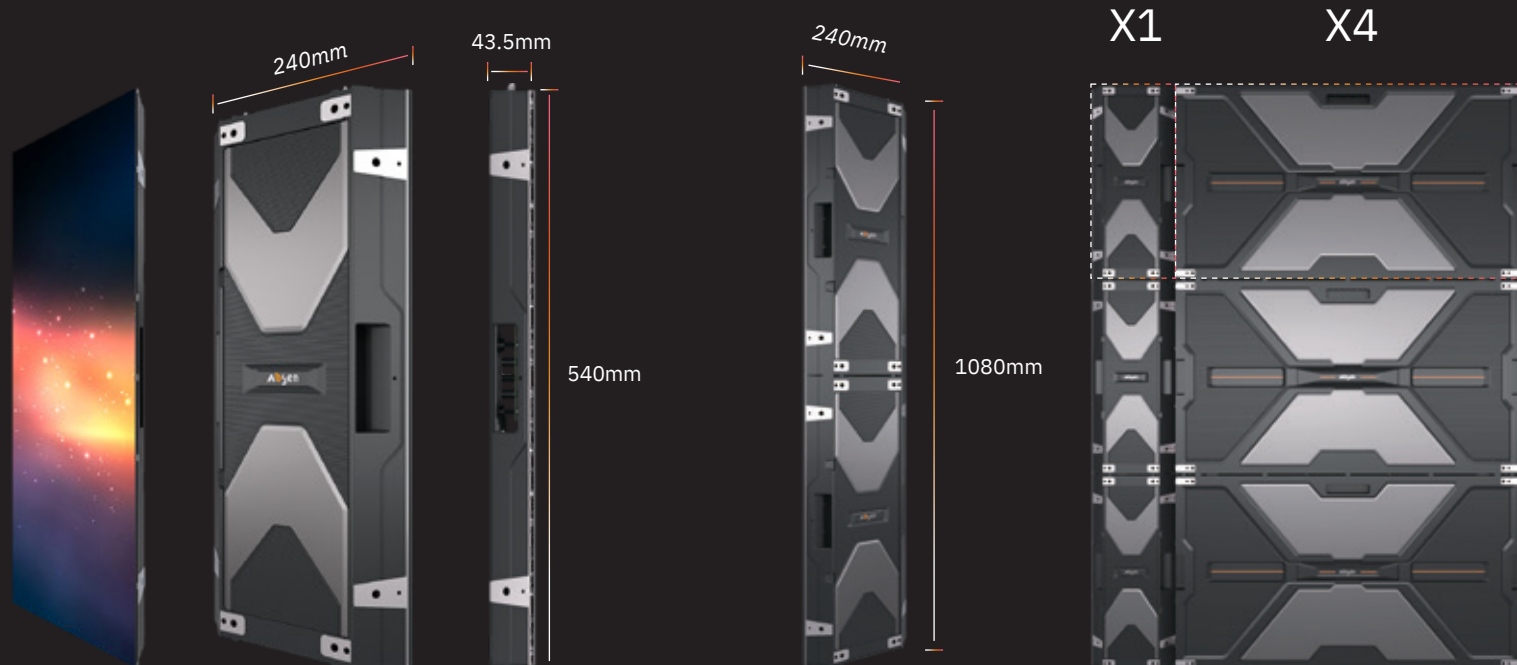
Optional dual backup version

Provides optional dual backup version to ensure continuous transmission of signal and power supply.



Flexible 45° edge-cutting small panel

Special 45° edge-cutting small panel provides more possibilities for creativity.



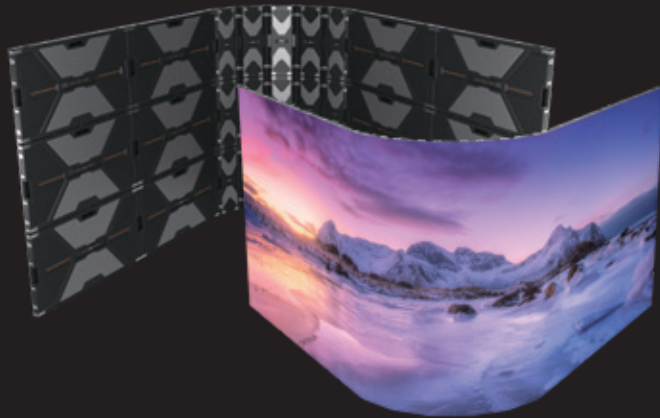
- 45° edge-cutting small panel
(Default 45° angle on both sides)

- 2-in-1 small panel
(With one PSU and one receiving card)



Creative and refined curves

Support concave and convex splicing to meet the various needs of customers.



- Flat screen with large panels + curve splicing with small panels

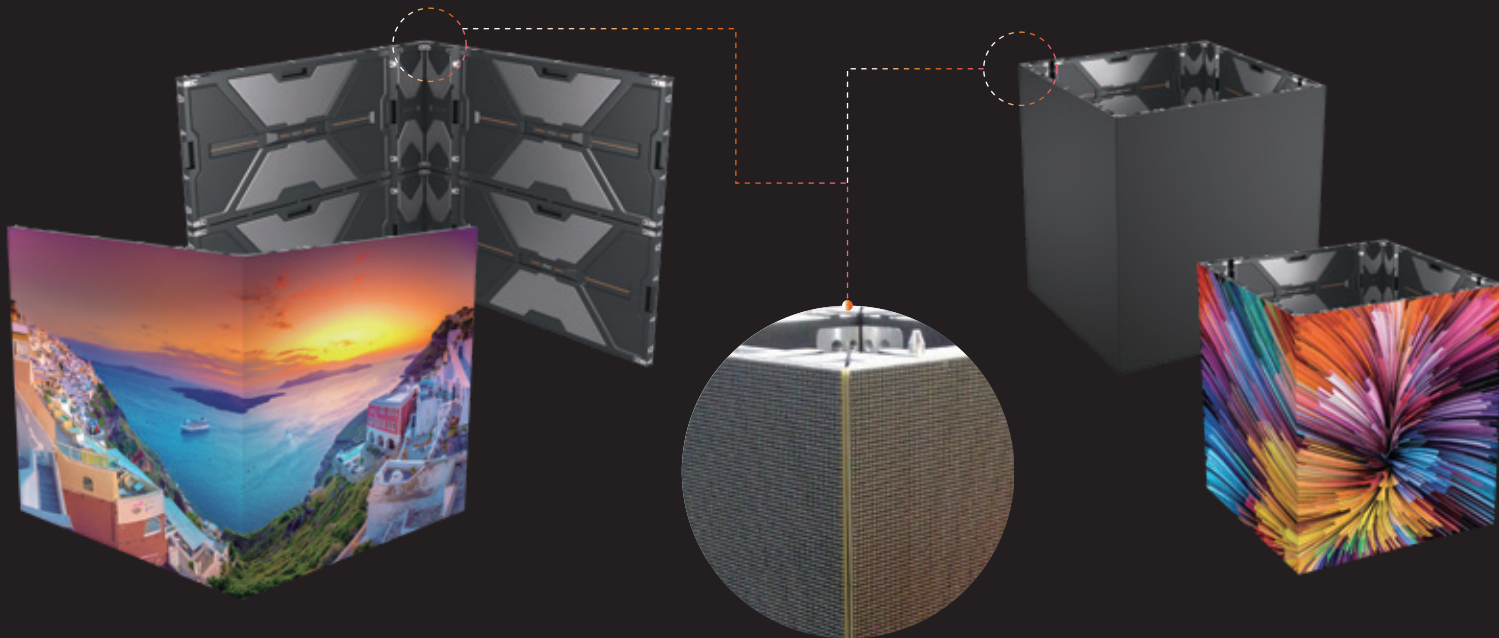


- Artistic wavy splicing with small panels



Elegant L-shaped splicing

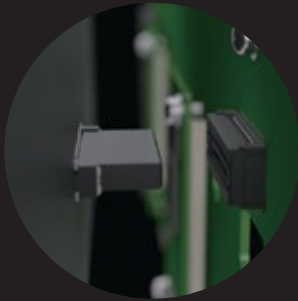
The small panels can make a right angle to create stunning L-shapes.



- 90° splicing

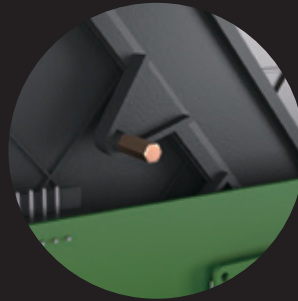
A whole new level of flatness and neatness

With high-precision floating connectors, positioning copper column and X/Y/Z axis alignment, flatness is improved multidimensionally. NX series adopts a hidden wiring design for neat look in the back.



Precise floating connector

Bright and dark lines
adjustment between modules



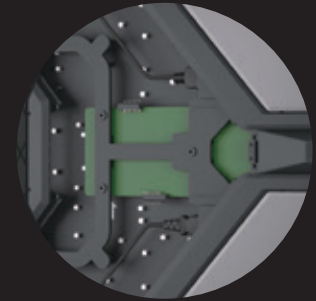
Positioning copper column

Flatness adjustment between
modules



X/Y/Z axis alignment

Flatness adjustment
between panels



Hidden wiring design

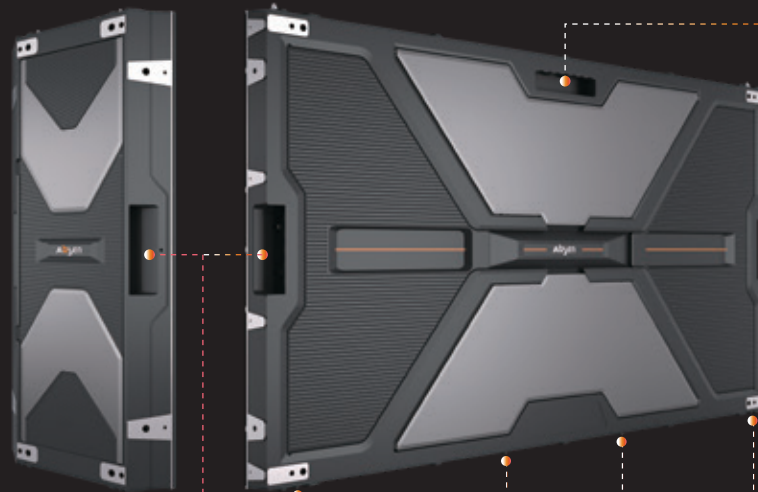
Tidy and elegant back

Ergonomic design and easy installation

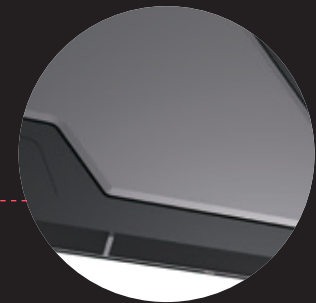
Ergonomic handles and anti-collision design for safe, fast and easy installation.



• Anti-slip side handle



• Carrying handle

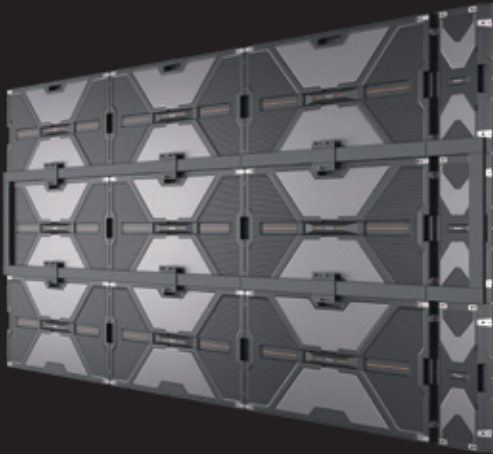


• Anti-collision design



Slim standard wall-mounting solution

Standard wall-mounting solution with a thickness of less than 80 mm, space-saving and beautiful.



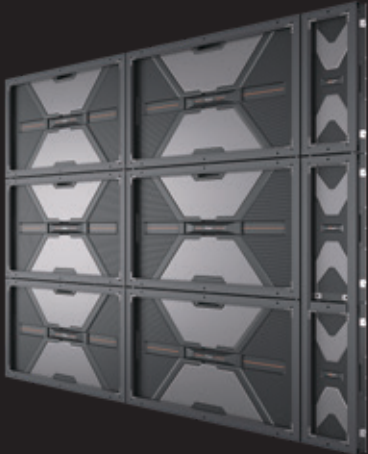
21mm

Thickness of backing strip

80mm

Total thickness with panels

(Flexible backing strip solution)



23.5mm

Thickness of frame kit

70mm

Total thickness with panels

(Standard 960*540mm, 240*540mm, 240*1080mm frame kit)



Supports hanging and stacking installation

Also provides hanging bar installation and steel structure stacking installation solutions to fit in all use scenarios.



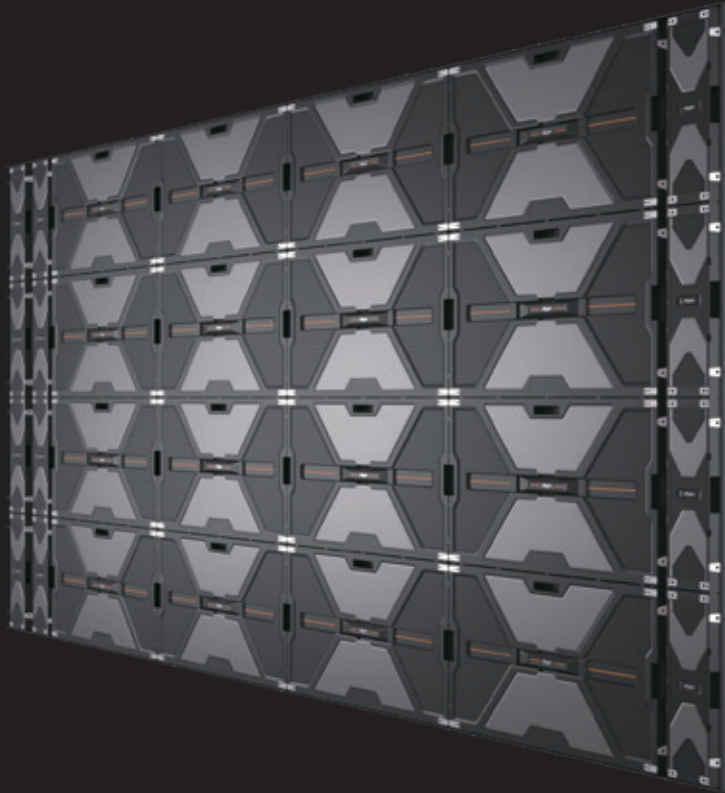
- Suspended with all-black hanging bar



- Floor installation with steel structure

Ultra-thin and textured trim pieces

Metal spraying ultra-thin standard trim pieces solution for enhanced look and esthetic feeling.



Metal spraying process

Delicate and smooth

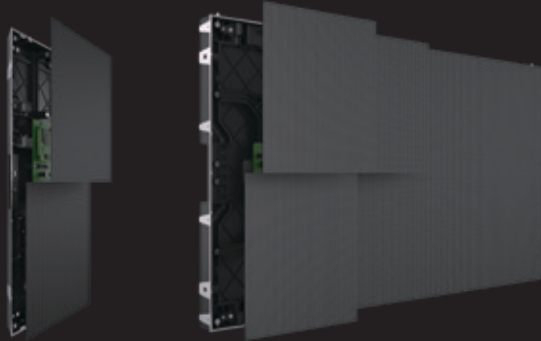


5mm thickness

Ultra-thin design

Convenient full front / rear maintenance

NX Series supports full front maintenance, requires no special maintenance channels, and saves more space. Additionally, the NX series features an innovative rotary clamshell back cover design, enabling easy rear maintenance.



- Front maintenance of module, PSU, receiving card, HUB board, etc.



- Dedicated front maintenance tool



- Rear maintenance of module, PSU, receiving card, HUB board, etc.



- Rear maintenance of PSU, receiving card; Module does not support rear maintenance



- Rotary clamshell design for easy rear maintenance

*The module of small panel does not support rear maintenance.

Quality and worry-free choice

It is manufactured in Absen's own factory through a standardized production process, and has obtained multiple certifications, allowing customers to use it without any worries.



Standardized manufacturing process

Every step of the production process is strictly managed to ensure product quality



Strict quality control

18 monitoring procedures 33 recording procedures
29 operating procedures 2,285 inspections and tests



Multiple certifications

Passed CE, ETL, FCC, RoHS, CCC, UKCA certifications TÜV Rheinland low blue light certification

Professional service, best experience

Absen's philosophy is initiative, efficiency, standardization and thoughtfulness.

Absen has built up a global network , able to provide prompt and professional local services.



Comprehensive support

Enjoy 2-year warranty, support up to 3-year extended warranty, lifetime maintenance, and enjoy 10+ items of professional service solutions to help you solve problems



24/7 response

24/7/365 available,
quick response in 10 seconds



Global coverage

400+ Absen certified partners, 2,600+ Absen certified engineers, covering most of the global market, the global service network is continuing to expand vigorously



One-stop service

Enjoy exclusive and professional service in the whole process of pre-sales, sales and after-sales



Multiple service channels

Providing service via multiple channels such as Hot line, WeChat, WhatsApp, E-mail and official website to quickly take care of service requirements



Service channels

Hot line: +86 400-700-3278

WeChat: 13923413428

WhatsApp: 008613923413428

Email: service@absen.com

Official website: www.absen.com



Service time (GMT+8)

8:30~24:00 : Staff service

00:00~8:30 : Intelligent system service

CONTACTO

(55) 8208 8704

marketing@creatio.lat



Parameters	NX1.5	NX1.8 Normal	NX1.8 High brightness	NX2.5 Normal	NX2.5 High brightness	NX3.7 Normal	NX3.7 High brightness
LED type	SMD1212	SMD1515	SMD1515	SMD1515	SMD1515	SMD1515	SMD1515
Pixel pitch (mm)	1.5	1.87	1.87	2.5	2.5	3.75	3.75
Panel dimensions (W×H×D, mm)	960×540×43.5/ 240×540×43.5						
Physical parameters	640×360/ 160×360		512×288/ 128×288		384×216/ 96×216		256×144/ 64×144
Panel resolution	640×360/ 160×360		512×288/ 128×288		384×216/ 96×216		256×144/ 64×144
Panel weight (kg)	10.5/ 2.7	10.5/ 2.7		10.4/ 2.7		10.3/ 2.7	
Panel material	Die casting aluminum						
Module size (W×H, mm)	240×270						
Brightness (nit)	800	800	1500	800	1500	800	1500
Refresh rate (Hz)	3840						
Grayscale (bit)	16 bit (Internal processing 16bit, hardware up to 14bit)						
Contrast ratio	4000:1	4000:1	6000:1	4500:1	7600:1	5200:1	7400:1
Color temperature (K)	6500						
Viewing angle (H/V, °)	150/150	160/160	160/160	160/160	160/160	160/160	160/160
Drive mode	1/4S	1/36	1/36	1/27	1/27	1/18	1/18
AC operating voltage(V)	100~240						
Power consumption (max./avg., W/m²)	480/160	420/140	606/202	450/150	534/178	480/160	609/203
Storage temperature (°C)	-40~+60						
Operating temperature (°C)	-10~+40						
Storage humidity (RH)	10%~85%						
Operating humidity (RH)	10%~80%						
IP rating	IP40/IP21						
LED lifetime (h)	100000						
Panel maintenance type	Fully front/ rear						
Panel installation type	Stacking/ wall-mounting/ hanging						

*Note: It is normal for the power consumption to fluctuate within ±15% due to the influence of the brightness of different batches of lamps. Please refer to the actual situation.

★ Shenzhen Absen Optoelectronic Co., Ltd. reserves the right to modify product design, specifications, and parameters without further notice.
Photos are used for illustration purpose only as products may differ from these photos. All rights reserved by Shenzhen Absen Optoelectronic Co., Ltd.

★ Shenzhen Absen Optoelectronic Co., Ltd. reserves the right to modify product design, specifications, and parameters without further notice.
Photos are used for illustration purpose only as products may differ from these photos. All rights reserved by Shenzhen Absen Optoelectronic Co., Ltd.

Absen Optoelectronic Co.,Ltd
18-20F Building 3A, Cloud Park, Bantian Huawei Base,
Longgang District Shenzhen, 518129, P.R.China
T: +86-755-89747399 E: absen@absen.com
F: +86-755-89747599 W: www.absen.com

Absen Inc.
7120 Lake Ellenor Drive, Orlando,
Florida 32809, USA
T: +1-407-203-8870 E: info@usabsen.com
F: +1-407-203-8873 W: www.usabsen.com

Absen GmbH
Hessenring 4c, 64546 Moerfelden-Walldorf (Frankfurt am Main),
Germany
T: +49 (0) 6105 718941-0 E: europa@absen.com
F: +49 (0) 6105 718941-29 W: www.absen-europe.com



Twitter: @LEDAbsen Facebook: @LEDAbsen
LinkedIn: Absen Instagram: absenled